



# Evolving Forests

## River Dart Coastal and Estuarine Woodland

Assessing the state and status  
of the unique and precious  
ecological corridors that  
fringe the river Dart



This work has been supported by the 'Woods into  
Management Forestry Innovation Fund', Forestry Commission



# Overview

The Southwest has a **unique resource** of coastal and estuarine woodland growing in saline conditions

These vital ecological corridors and important landscape elements are **under threat**

Through surveys, seed collection and planting-trials we can **secure the future** of these special places

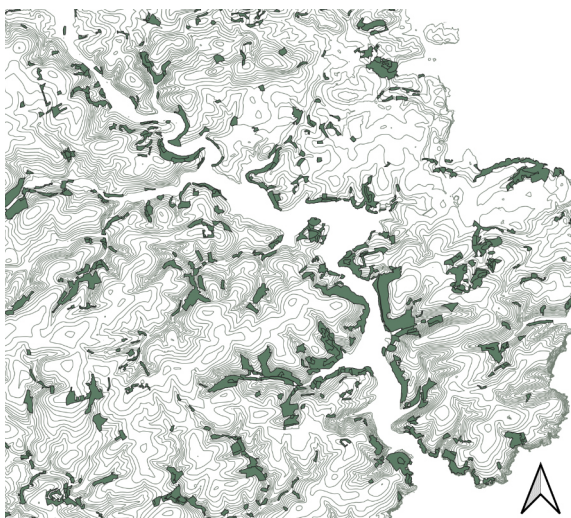
## Project context

Devon and Cornwall has 10,500ha of woodland within 500m of saline water that has high landscape value and very high ecological value. A lot has been written about these woodlands yet their state and status are little understood.

We need to understand if these woodlands are threatened by factors such as pests & diseases, reduced natural regeneration or lack of management. Much of the woodland is single-age, single-species, and mature.

We will explore how best to bring these woodlands into long-term resilient management using:

- Landowner, local community, and specialist involvement
- Ecological and forestry inventory surveys
- Future climate modelling
- Seed collection and planting trials
- Silvicultural proposals, prescriptions and guidance



## Your role?

Are you interested to find out more about the project and the future of the Dart landscape?

Are you a woodland owner or manager and happy for us to access your woodland to...

- conduct surveys
- collect seed
- discuss the possibility of planting trials

We are hosting a drop-in event...

**4pm-8pm**

**Thursday 2<sup>nd</sup> February**

**Michael Young Room, Dartington Hall**

...a chance to get together, ask questions, and learn more about the project. Your input, knowledge and view are invaluable to the future of these woodlands.

## Contact

If you are happy and keen for us to get in touch ***please click here*** to provide some basic details and let us know how best to contact you.

Alternatively, drop us an email at [hello@evolvingforests.com](mailto:hello@evolvingforests.com)

We look forward to hearing from you,  
*Jez and Kath*